



CASE STUDY | Open Grid Europe

# A Streamlined DMS for the Entire Company

Open Grid Europe has introduced a streamlined and efficient DMS for 1,800 users with the help of fme AG. Six million documents, along with all their attributes, were cleanly imported, and the document archives extensively automated and migrated without any errors using migration center.

## Need For a Company-Wide Document Management System

When the company was founded, Open Grid Europe required its own IT infrastructure and document management system (DMS). The existing documents from the predecessor company needed to be imported into the new DMS.

Its document management system had been tailored to the needs of selected departments and expanded and customized over time. As such it was unable to meet the needs of the entire company; moreover, its structure had become relatively complicated.

## The Objective: A Simple and Straightforward DMS

The new DMS needed to provide a simple, clear, and straight-forward structure for the 1,800 users with minimum maintenance and support requirements for future versions. To achieve this, the standard system from EMC Documentum was tailored to the needs of the company with only a few select changes. Plans also called for a new standard folder structure to be created. As the second key task, the migration of approximately six million existing documents, distributed across approximately 2.5 million folders, needed



Open Grid Europe plans, builds, operates, controls, and provides maintenance for the biggest gas pipeline network in Germany with a length of around 12,000 km. Open Grid Europe, a subsidiary of Essen-based E.ON Ruhrgas AG, was founded as part of the process to liberalize the electricity and natural gas markets within efforts to implement the 3rd EU internal market package.

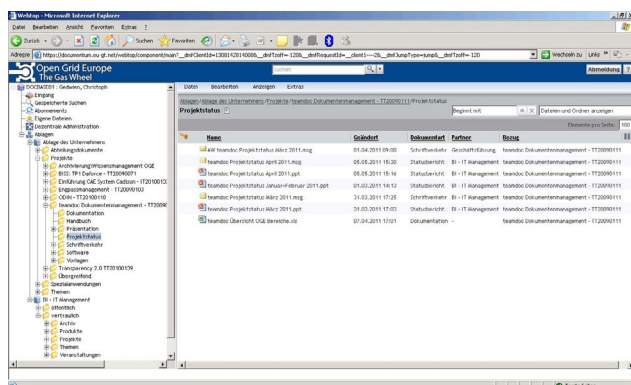
to be automated as much and as efficiently as possible. The objective for migration was to not just to carry out a straight metadata transformation, but also to unify the file structure.

## The Solution: A DMS with Revision-Proof Archiving

Based on experience with the previous DMS, a new DMS was designed for the entire company together with fme AG. Special solutions for individual departments were fully off the table. The most important components were the content server for the DMS management, Webtop as web application, and the Centera archiving system from EMC for revision-proof archiving. fme's smartBar was implemented as a simple and versatile search client with flexible filter functions. The simple, user-friendly client was developed with a particular emphasis on ease and efficiency of use when working with the DMS. Information objects can be stored or searched in the repository with just a few mouse clicks.

## Successful Migration of Mass Data

As part of transferring the relevant legacy documents to the new system, the out-of-the-box migration center software



Open Grid Europe has set up a new DMS for the entire company. It features a simple structure, is easy to manage, and requires minimum maintenance, to name but a few of its many strengths.

was successfully implemented for the migration of mass data. While doing so, all documents, together with their attributes and links, needed to be cleanly imported, the migration extensively automated, and all data transferred without any errors. A total of 40 document types were migrated from the legacy system. Since a number of attributes such as document type, partners, and runtime had been set up as user-specific in the former system, numerous duplicates had to be identified, removed, and adapted to the now standardized attribute sets.

## Benefits

- All users at Open Grid Europe can now access a unified DMS based on their respective permissions.
- The future-proof, lower-maintenance system was preferred over other, more costly specialized solutions.
- No need for time-consuming searches in other systems.
- All of the legacy files were successfully integrated by the migration center.
- The DMS is easy to use and performs well.
- The revision-proof archiving system guarantees compliance with the legal requirements.

»The migration center functioned perfectly during the transfer of the legacy data. We were able to use it to filter all our stored documents and automatically convert them according to our specifications. It was easy to control each of the processes and we are truly satisfied with the quality of the results.« reports Christoph Gedwien, internal IT consultant at Open Grid Europe.

## Future Outlook

The new DMS at Open Grid Europe was initially launched in a few departments and will be progressively rolled out in the remaining departments.

## Technology

- EMC Documentum Content Server 6.5 SP3
- EMC Centera (hardware; audit-proof archive)
- EMC Webtop 6.5 SP3

## Quickfacts fme Products & Solutions

### migration center

The migration center is able to meet any conceivable migration requirements with its 'out-of-the-box' features that save both time and deliver top performance. As such, it is the ideal power tool for storing large volumes of data, intelligently transforming metadata, and optimizing document classification to meet any business need. With the migration center, large volumes of documents can be migrated to different target systems without the need for additional programming or any disruptions to users. All operations can be simulated and tested separately before the data is imported, while remaining secure and fully auditable. [www.migration-center.com](http://www.migration-center.com)

### smartBar

ECM Power made easy! ■ ■ ■

The smartBar is a simple and intuitive client for Enterprise Content Management (ECM) designed with a particular emphasis on user friendliness and efficiency. Any type of information object can be stored or searched with just a few mouse clicks. Lightning quick navigation, power assisted check-in and attribute assignment, dynamic search capabilities, document synchronization for working offline, and portability across different ECM platforms make smartBar the client of choice for working with your stored documents. [www.smartbar.de](http://www.smartbar.de)

- fme setupSmart (Webtop extension to manage departments/divisions with ease)
- fme mail module (for automated e-mail import)
- fme migration center (for the migration of data from the legacy system to the new one)
- fme smartBar (as an alternative client for search functions as a Webtop extension)